

## **WESTMORE BEACH VILLAS LIMITED**

Westmore Beach Villas is located in Whitehouse, Westmoreland on the quiet South Coast of Jamaica, built in 2020 showcasing stunning beach views and sunsets. This spacious, private and secluded get-away consists of four (4) one bedrooms and (2) two bedrooms self-contained Luxury Villas. The first floor Villas and the Beach are accessible for the physically challenged. The Villas are self-contained, contemporarily furnished and appointed, and are half a mile from the Town Center of Whitehouse, Westmoreland. Westmore Beach Villas is 1 1/2- 2 hours from the Montego Bay Airport and 1 hour from Negril. WIFI is accessible property wide. Westmore Beach Villas is ideal for large family vacations, weddings and day only guests. The property is smoke free. This secluded location offers privacy and quiet reflective time for rejuvenation. The white sand beach welcomes you and your family. Near by coral reef is great for snorkeling.

### **Description of Villas & Amenities:**

#### ***Two (2) Bedroom Luxury Villas (Villas 3 & 4)***

The 2 bedroom Villas occupy both the first and second floor levels with entry on the first floor. They consist of approximately 1600sqft (148.65 sq meters) each of living space.

#### ***Four (1) Bedroom Luxury Villas (Villas 1, 2, 5 and 6)***

The one bedroom villas are located on either the first floor or the second floor with approximately 1000sq feet (92.9 square meters) each of living space.

### **Interconnecting Villas:**

Larger accommodations are afforded through interconnecting Villas. The two 2 bedroom Villas (Villas 3 & 4) are interconnected on the second floor creating a large 4 bedroom residence with approximately 3200 sqft (297.3 sq meters) accommodating 12 persons. A two bedroom Villa (Villa 4) is also interconnected to a one bedroom Villa (Villa 5) on the first floor creating a large 3 bedroom dual accommodation of approximately 2600 sq feet (241.5 square meters) of living space accommodating 8 persons. Additionally the interconnection of all 3 Villas (Villas 3, 4 and 5) provides approximately 4200 sqft (390.2 square meters) of living space accommodating 14 – 16 people.

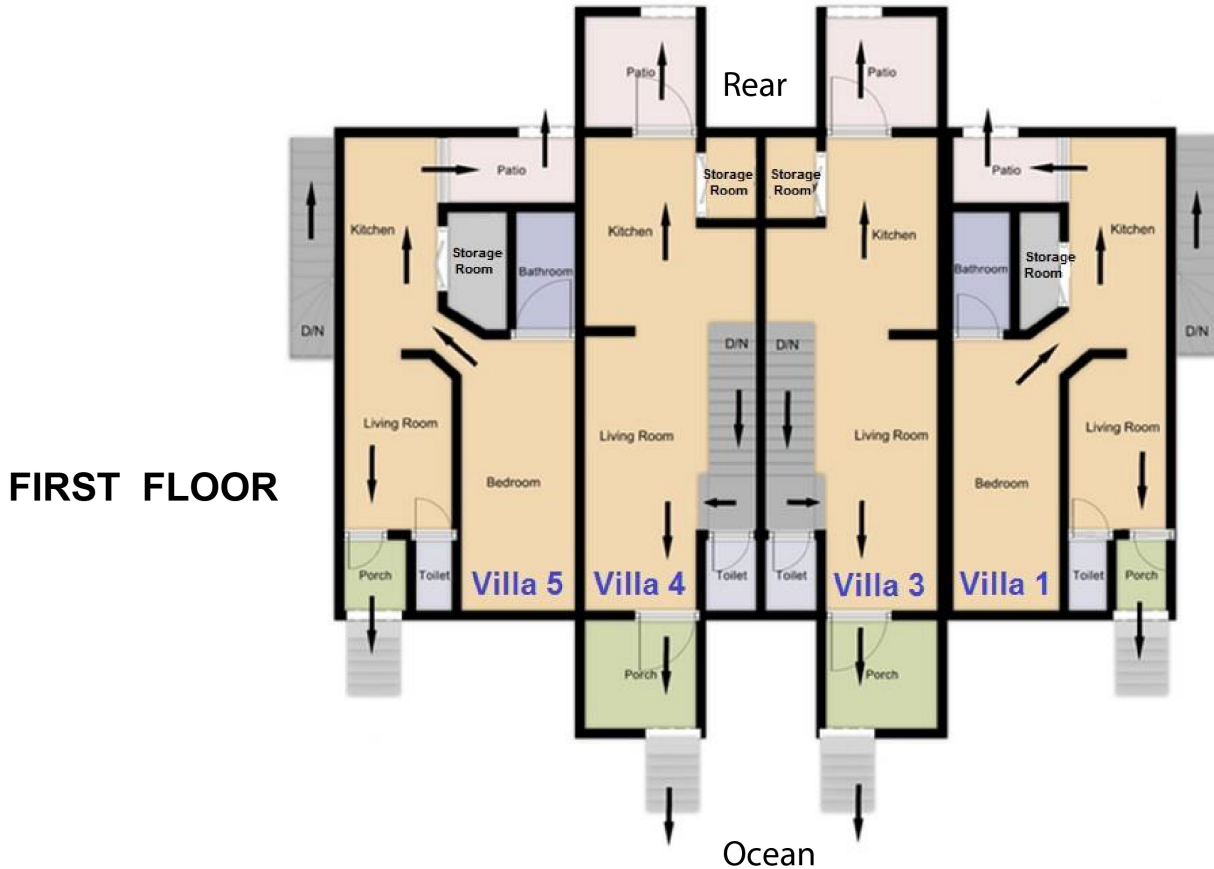
# WESTMORE BEACH VILLAS LIMITED

## Cottage:

This quaint and cozy wooden one bedroom Cottage is unattached from the main Villas and located on the first floor with approximately 350 sqft (39 sq meters) of living space including a loft area. It consists of pine wood floors, fans, safety deposit box, smart T.V., kitchenette with electric stove, refrigerator/ freezer, microwave, toaster oven, cutlery and dinnerware.

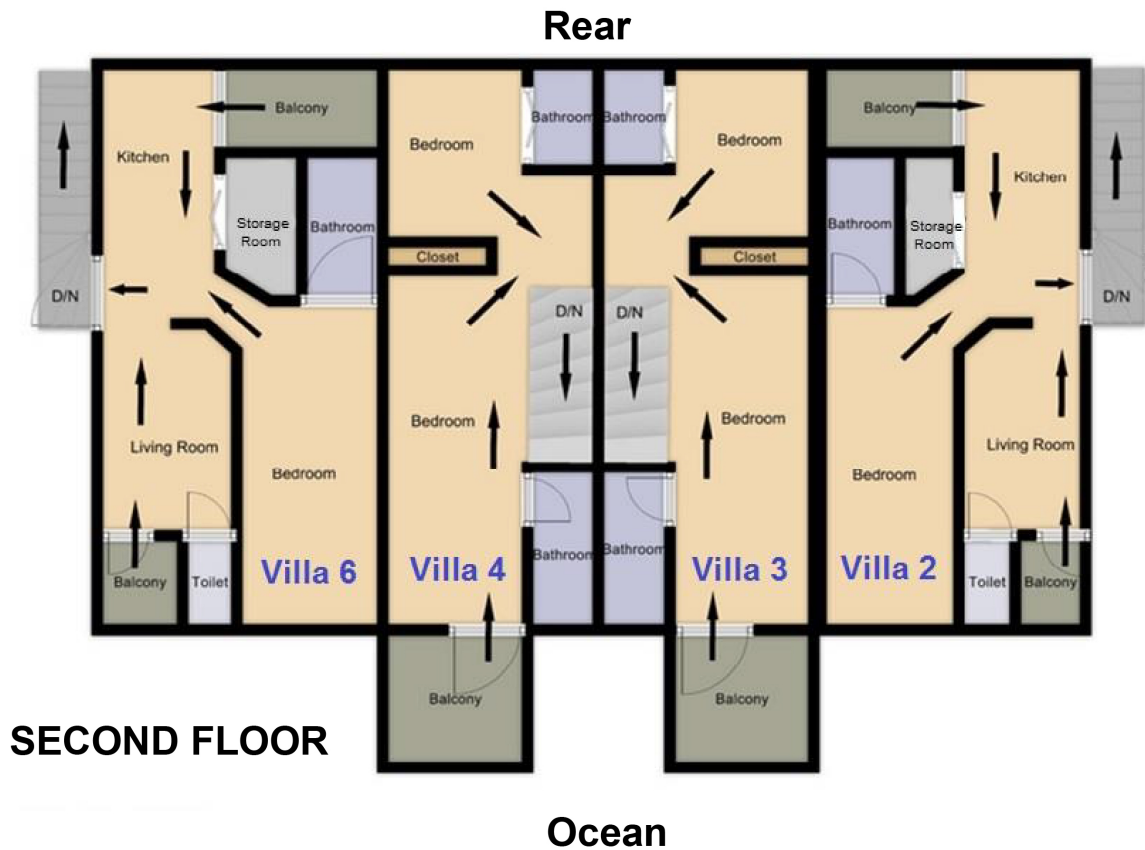
## VILLA FLOOR PLANS (Not done to scale)

### Westmore Beach Villas



# WESTMORE BEACH VILLAS LIMITED

## Westmore Beach Villas



**Additional sleeping accommodation:** This is afforded through the use of full-size air beds and sleeper sofas.

**Lawn Areas:** There is a beautiful manicured, spacious lawn area adjoining to the beach front suitable for exercising, lawn games and special events.

**Laundry:** Onsite laundry facilities are available at an extra cost.

## **WESTMORE BEACH VILLAS LIMITED**

**Special Events:** Weddings and other special events may be arranged with adequate advance notification and planning.

**Disabled Persons:** Personal attendants can be arranged at an additional cost.

### **Villa Guide**

Welcome to our environmentally friendly, smoke free, luxury Villas located on Jamaica's South Coast near to the fishing village of Whitehouse, Westmoreland. Westmore Beach Villas offers privacy and quite reflective time for rejuvenation. The white sand beach welcomes you and your family. The nearby coral reef is great for snorkeling.

### **Airport Arrival:**

Plan to arrive in Jamaica at the Montego Bay Sangster's International Airport (MBJ). All passengers should clear Immigration. You are staying at the Westmore Beach Villas in Whitehouse at 19 Sunset Drive, Culloden, Westmoreland.

- Claim your luggage
- Clear customs

After clearing customs you will enter the transportation hall where you may receive porter assistance (tip at your leisure), then proceed to the Exit doors to the right to the covered pick-up area. If transportation arrangements were made with the Westmore Beach Villas prior to arrival, your driver will await you in the pick-up area with your name on a placard. The drive from the Airport to Westmore Beach Villas, will take approximately 1 ½ – 2 hours depending on local traffic conditions.

### **Communications:**

Office Telephone: 876-724-7396

Email: [Manager@westmorevillas.com](mailto:Manager@westmorevillas.com)

Website: <https://www.westmorevillas.com>

Complementary WIFI is accessible on property for registered guests. Most telephone credit cards will not work for making long distance calls from Jamaica. Check with your service provider before your travel for calling options from

## **WESTMORE BEACH VILLAS LIMITED**

Jamaica. You may purchase a Jamaica prepaid calling card to use for international long distance calls. Free calling, via using WhatsApp may be possible. The resilience of WIFI and Internet service is variable.

### **Meals:**

Meals are not included as part of the booking rates. Services of a cook/housekeeper may be arranged and he/she will work with you in planning your meals and in purchasing local food and beverage supplies as desired. As a fishing village, Whitehouse, Westmoreland has an active fresh fish market. Local grocery costs will vary based on your desired menu, however may average \$50 - \$75 per day per adult and \$35 - \$50 per day for pre-teens. Meal plans will need to be arranged at least 30 days prior to arrival. We suggest you drink bottled water. Guest with known life-threatening food allergies are advised to carry an **EPI-PEN** on their person and to advise Villa and restaurant staff of such allergies.

### **Security:**

Jamaica is a friendly island however it is prudent that you engage in personal safety awareness particularly when off property. There is a full time property care-taker on site at all times.

### **Parking:**

Onsite parking as available.

### **Points of Interest:**

There are several tourist attractions that are proximate and available as well as several golf courses. Additional information may be found on-line or at the Villa.

**Local and proximate restaurants:** There are a limited number of small takeout only, Jamaican restaurants on Main Street in Whitehouse. Full service restaurants are in the surrounding community of Blackriver.

## ***WESTMORE BEACH VILLAS LIMITED***

**Local Transportation:** Local transportation vendors (taxis) are not a part of Westmore Beach Villas and separately charge for their services.

### **Tipping Notes:**

Tipping is at your discretion and is well appreciated by staff and service partners. Envelopes can be provided at your request and tips can be given to Management for distribution to the team members at the end of your stay.

### **Airport Return:**

Do not forget to arrange for your airport return trip prior to your departure date. Plan to be at the airport at least 3 hours prior to the departure time. Drive time from the Villas to the Montego Bay Sangster's International Airport is approximately 2 hours.